

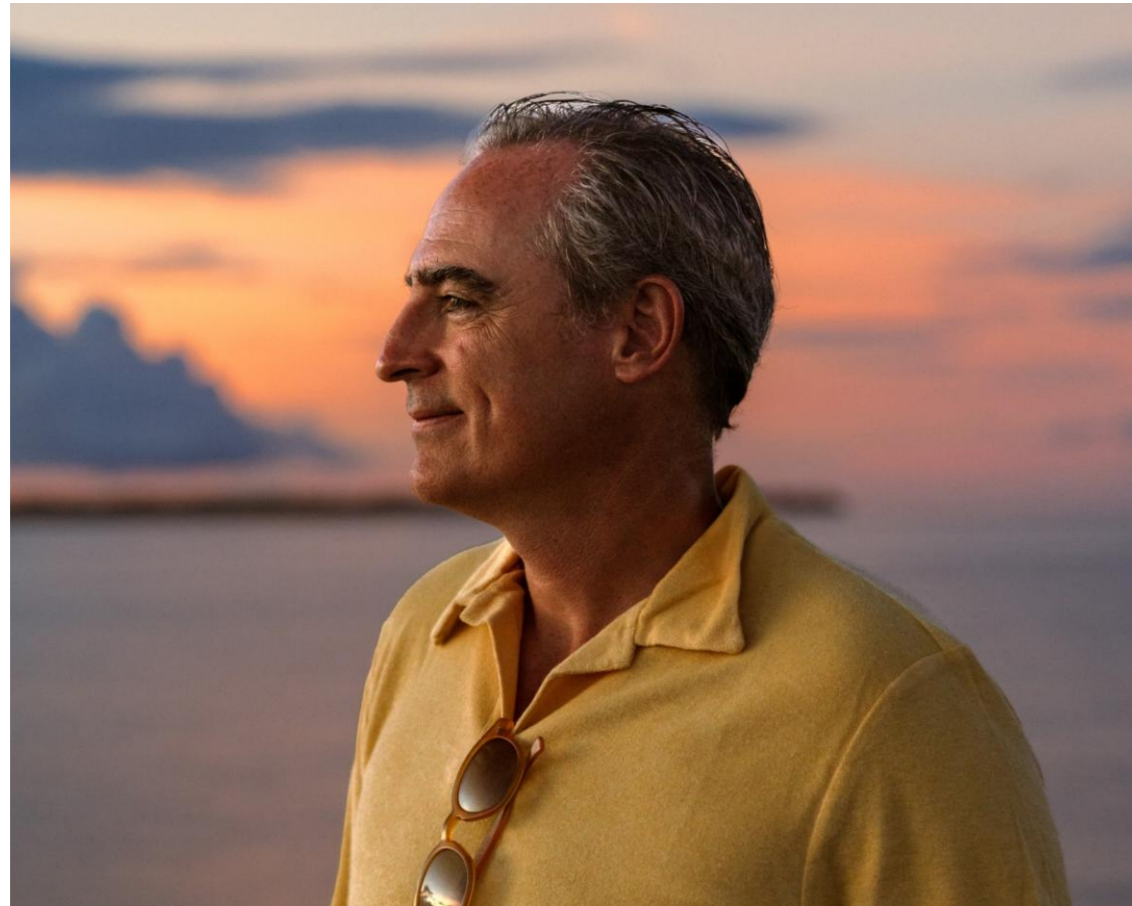


AQUA EXPEDITIONS



OUR COMMITMENT TO SUSTAINABILITY  
2025 HIGHLIGHTS & IMPACT

## A LETTER FROM THE FOUNDER



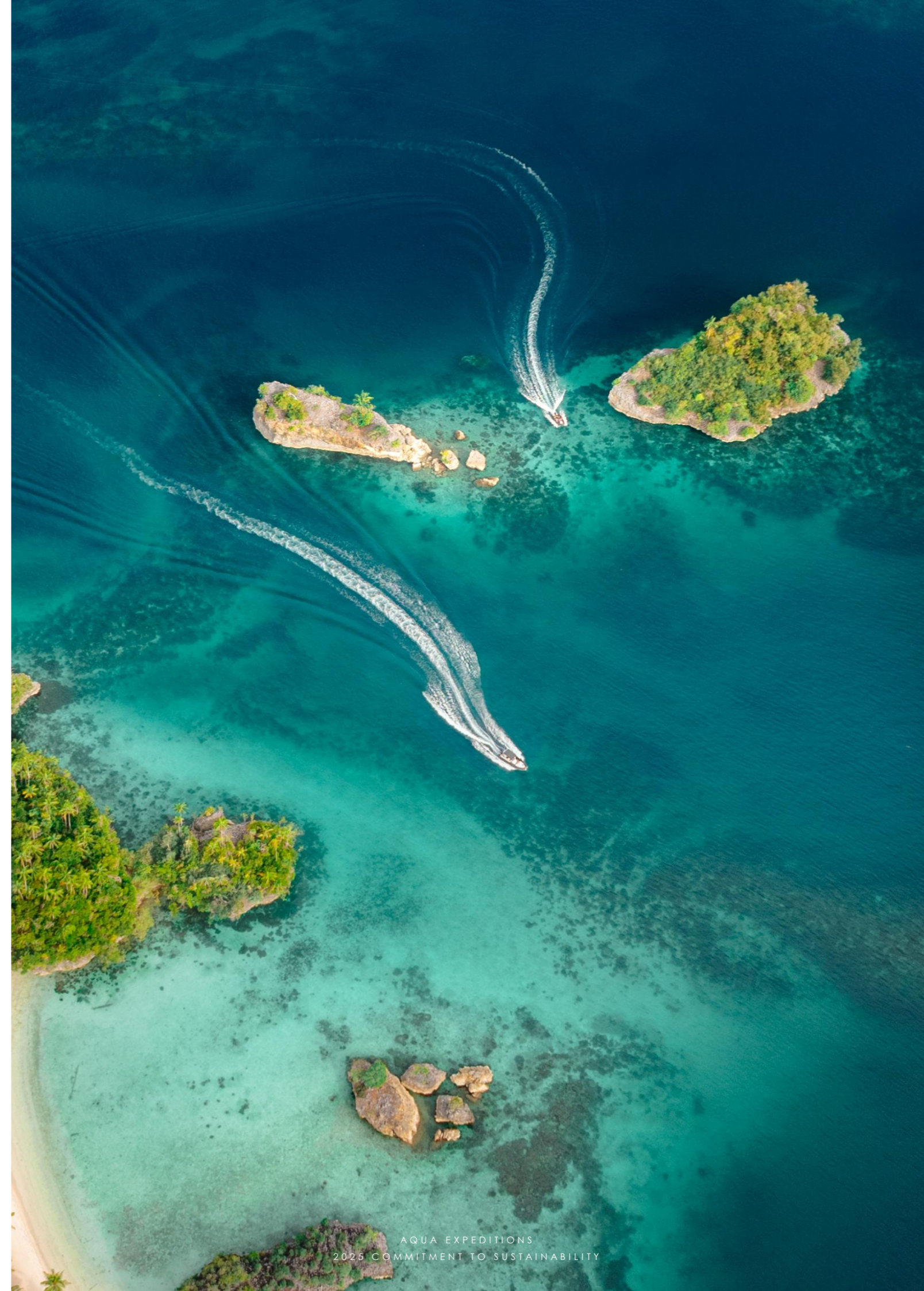
### NEW HORIZONS

In 2025, we welcomed Aqua Lares to our fleet, announcing our expansion into East Africa and Svalbard & the Arctic Circle. As we continue to explore new destinations, we carry with us our commitment to sustainable sailing — a continuous effort to provide support and deliver a net positive impact for each region's ecosystems and local communities.

From scouting and itinerary design down to our day-to-day operations, sustainability is integrated deep within the Aqua Expeditions ethos. We put as much thought into exploring the remote regions of Asmat & West Papua as we do into preserving the traditions which their tribes have passed down over generations. We are delighted to swim and snorkel with reef sharks in Galapagos and equally pleased to help conserve the mangroves where they nurse their pups.

The only way to explore — and ensure we may continue to do so for decades to come — is to explore responsibly. I am proud to present our 2025 Sustainability Highlights & Impact, detailing our contributions to protecting some of the world's most unique destinations.

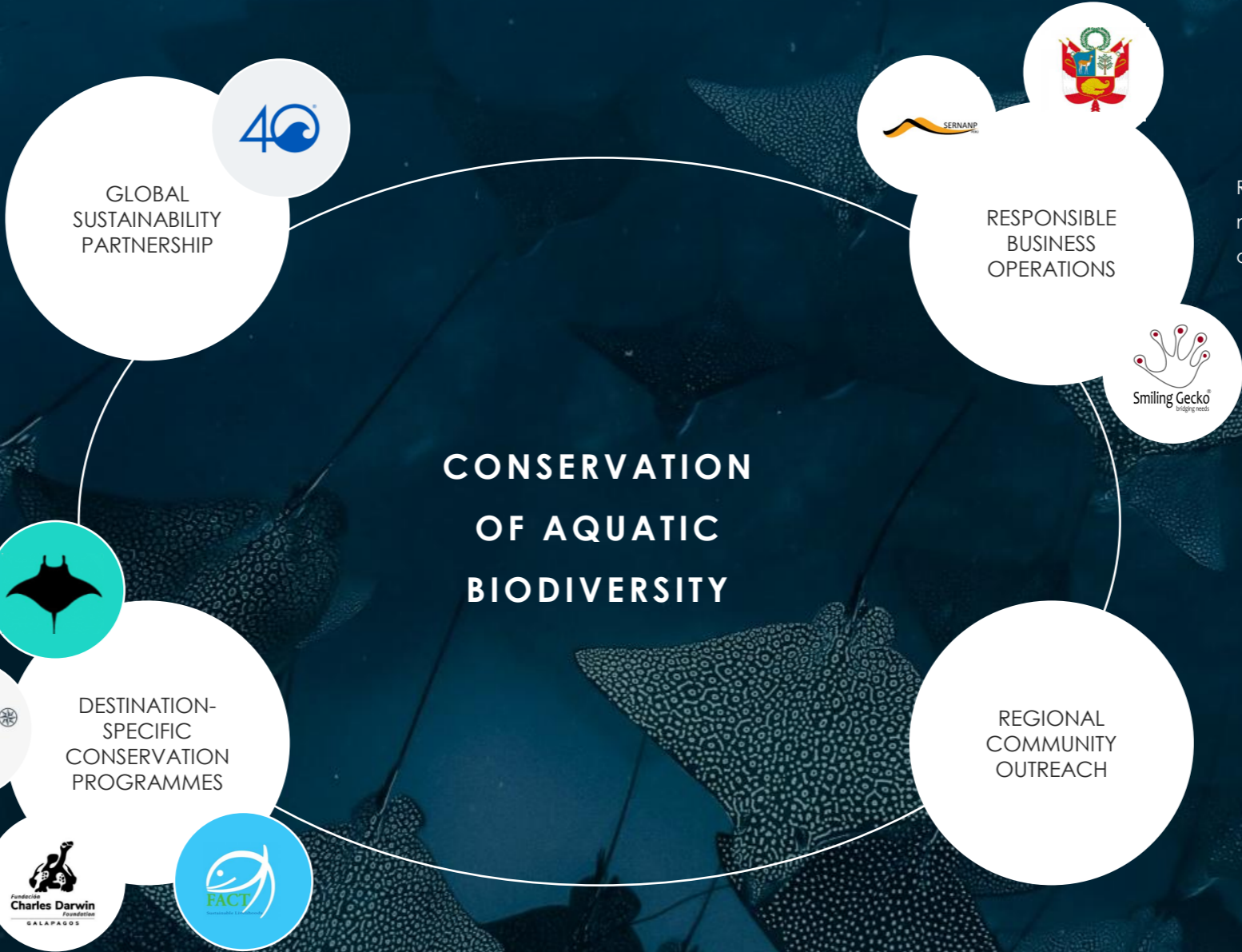
Francesco Galli Zugaro  
CEO & Founder



# OUR VISION FOR SUSTAINABLE SAILING

From the Mekong River to the Pacific Ocean, the world's waters set the stage for every Aqua expedition—delivering memories like spotting caiman in the Peruvian Amazon or swimming with moon jellyfish in East Indonesia.

As such, we are committed to conserving aquatic biodiversity across our destinations through four key pillars.



Partnered with 4Ocean on a mission to combat plastic pollution impacting the world's oceans and coastlines.

Responsible sailing initiatives for waste management, sustainable supply chains, and emissions reduction.

Engaging in local and regional conservation partnerships with an aim to impart a net positive impact on the environment.

Leading community awareness programs and educational efforts, as well as supporting local economies through our hiring practices.

# 2025 SUSTAINABILITY HIGHLIGHTS



## 50,000+ POUNDS OF OCEAN PLASTIC AND DEBRIS REMOVED WITH 4OCEAN

As 4Ocean's first-ever cruise partner, we are pleased to have collaborated in the removal of over 50,000 lbs of ocean plastic and debris from the world's waterways over the past two years.



## PARTNERSHIP WITH FISHERIES ACTION COALITION TEAM (FACT)

Supporting conservation and community development initiatives along Tonle Sap Lake through regional collaboration in Cambodia.



## BECAME A PROVISIONAL MEMBER OF THE ASSOCIATION OF ARCTIC EXPEDITION CRUISE OPERATORS (AECO)

Following responsible Arctic expedition travel through alignment with AECO's environmental guidelines and sustainable tourism standards.



## ATTAINED CERTIFICATE OF RECOGNITION FROM SMILING GECKO

Recognized for demonstrating corporate social responsibility through ongoing procurement initiatives.



## WINNER OF LATA EXCELLENCE AWARDS 2025 FOR BEST CRUISE OPERATOR

Honored for demonstrating responsible expedition travel through significant plastic reduction, wastewater purification systems, and conservation partnerships across destinations.



## RECOGNIZED AS AN ALLY OF PRESERVATION (SERNANP)

Recognized as an official Ally of Preservation, supporting SERNANP's mission of conserving Peru's protected areas and their biodiversity.



## REGIONAL PARTNERSHIP WITH THE CHARLES DARWIN FOUNDATION (CDF)

Supporting the CDF's Shark Ecology, Mangrove Ecology, and Education and Outreach Programs through collaborative fundraising in the Galapagos Islands, Ecuador.



## ONGOING PARTNERSHIP WITH INDONESIAN MANTA PROJECT (IMP)

Supporting IMP's research initiatives including the Manta Ray Ecology and Conservation Research Program and the Indonesian Emerging Conservationist Scholarship Program.



## ONGOING PARTNERSHIP WITH WILDLIFE CONSERVATION SOCIETY (WCS)

Supporting the rehabilitation of Peru's Paiche fish and Taricaya turtle population. In 2025, we have re-nested 352 turtle eggs at our Nauta dock.



## ATTAINED CERTIFICATIONS FROM THE PERUVIAN MINISTRY OF FOREIGN TRADE AND TOURISM

Certifications for Good Practices in Tourism (Gold Category) and Good Practices in Water Transportation recognized our commitment to responsible travel.

# GLOBAL PARTNERSHIP WITH 4OCEAN



Plastic pollution causes devastating harm to aquatic species, threatening millions of lives each year. Through this initiative, we join a collective endeavor – undertaken by individuals and corporations around the globe – to protect the future of our rivers and oceans.

Over the past two years, we have contributed to the removal of over 50,000 pounds of plastic from the world's oceans, rivers, and coastlines.

## CERTIFIED PARTNER



Aqua is a certified 4Ocean clean-up partner, supporting the organization's mission of cleaning the world's waterways

## ONBOARD CLEAN-UPS



Each Aqua Expeditions vessel is equipped with netted bags for routine clean-ups by the crew and guides

## UPCYCLED BRACELETS



Guests can contribute through the purchase of bracelets, each of which represent five pounds of plastic removed from the ocean

As part of our partnership with 4Ocean, each of our vessels is equipped with netted bags for routine clean-ups at our different excursion locations. The waste collected is recorded to derive insights about the most common types of plastic found in the different regions we sail.

Tracking and analyzing plastic waste collection data is essential for informed policy-making and targeted waste reduction strategies. By understanding the most commonly found types of plastics, organizations and policymakers can implement more effective regulations, such as



Restrictions on problematic materials



Improved recycling programs



Incentives for sustainable alternatives



Additionally, identifying high-volume waste types enables more focused cleanup efforts and public awareness campaigns, ultimately reducing plastic pollution at its source.



## PARTNERSHIP WITH FISHERIES ACTION COALITION TEAM



We have partnered with the Fisheries Action Coalition Team (FACT) to support conservation and community development initiatives around Cambodia's Tonle Sap Lake. Through this collaboration, Aqua Expeditions contributes to efforts in sustainable fisheries management, aquatic biodiversity protection, and community-led programs that strengthen local livelihoods and responsible eco-tourism.

### AQUATIC BIODIVERSITY

FACT works with local fishing communities around Tonle Sap Lake to protect fish habitats, restore aquatic ecosystems, and support community-led conservation efforts that safeguard the region's biodiversity.

### COMMUNITY EMPOWERMENT

FACT strengthens community fisheries organizations and grassroots networks, enabling local fishers to participate in sustainable resource management and advocate for the protection of fisheries and water resources.

### FUNDRAISING

As part of our partnership with FACT, Aqua Expeditions contributes resources to strengthen community conservation efforts, including the donation of communication equipment to support patrols against illegal fishing and the provision of reused operational items to assist local tourism initiatives.

## PARTNERSHIP WITH ASSOCIATION OF ARCTIC EXPEDITION CRUISE OPERATORS



Aqua Expeditions has gained provisional membership with the Association of Arctic Expedition Cruise Operators (AECO), adhering to the same environmental guidelines, sustainable tourism standards, and bylaws as full members. Through this alignment, we support responsible Arctic expedition travel and demonstrate our commitment to protecting polar ecosystems and communities.

### ENVIRONMENTAL PROTECTION & WILDLIFE CONSERVATION

Following strict protocols to minimize environmental impact and protect Arctic wildlife, including maintaining safe distances from animals, avoiding sensitive sites, and preventing disturbance to fragile ecosystems.

### COMMUNITY ENGAGEMENT & CULTURAL RESPECT

Supporting Arctic communities through respectful engagement, responsible tourism practices, respect for indigenous cultural sites, and partnerships that benefit remote settlements.

### RESPONSIBLE LANDING PRACTICES & WASTE MANAGEMENT

Following strict protocols for landings to minimize environmental impact, including designated landing sites, group size limits, and zero-littering policies to preserve Arctic ecosystems.

## PARTNERSHIP WITH CHARLES DARWIN FOUNDATION



We have teamed up with the Charles Darwin Foundation (CDF), an organization that focuses on conserving the fragile Galapagos ecosystem through scientific research. As of 2025, we are committed to supporting the CDF's Shark Ecology, Mangrove Ecology, and Education and Outreach Programs through an annual donation and collaborative fundraising.

### SHARK ECOLOGY

The CDF Shark Ecology program focuses on studying distribution and movement patterns of endemic shark species found inside the Galapagos Marine Reserve (GMR).

### MANGROVE ECOLOGY AND CLIMATE CHANGE

The CDF's Mangrove Ecology and Climate Change Program focuses on the identification of key mangrove areas in each bioregion that contribute to carbon storage, biodiversity, and fish production.

### FUNDRAISING

An annual donation from Aqua Expeditions will go towards supporting CDF's Shark Ecology and Education and Outreach Programs. Guests will also be able to support fundraising efforts through the purchase of CDF merchandise on board Aqua Mare

## PARTNERSHIP WITH INDONESIAN MANTA PROJECT



Since the launch of Aqua Blu, we have collaborated with the Indonesian Manta Project (IMP), supporting their research and exploration of manta habitats to raise awareness around marine conservation. As of 2025, we have expanded our commitment to support IMP's research initiatives, including the Manta Ray Ecology and Conservation Research Program and the Indonesian Emerging Conservationist Scholarship Program, through collective fundraising and an annual donation.

### MANTA RAY ECOLOGY AND CONSERVATION RESEARCH PROGRAM

Using various research and monitoring techniques, IMP drives programs that address critically important manta conservation issues in Indonesia.

### INDONESIAN EMERGING CONSERVATIONIST SCHOLARSHIP PROGRAM

This scholarship program empowers emerging leaders to implement localized, small-scale conservation initiatives under the guidance of Thrive Conservation and Manta Trust

### FUNDRAISING

An annual donation from Aqua Expeditions will go towards supporting IMP's research and conservation project. Guests will also be able to support fundraising efforts through donations or the purchase of IMP merchandise on board Aqua Blu.

A woman with her hair in a bun is focused on weaving on a traditional wooden loom. She is wearing a patterned blouse. The loom is set up in a rustic, open-air structure with wooden beams and yellow fabric curtains in the background. The lighting is warm and natural, highlighting the textures of the threads and the woman's concentration.

## COMMUNITY AT THE HEART OF EVERY EXPEDITION

Community engagement is deeply woven into every itinerary we design, ensuring that the economic benefits of tourism flow directly to the people who call these remote regions home. From the ribereños in the Peruvian Amazon to the floating communities along the Mekong River, our expeditions ensure authentic cultural exchanges and respectful interactions as guests gain an understanding of local culture and traditions.

# AN ILLUSTRATION OF COMMUNITY ENGAGEMENT

Every excursion along our 7-night itinerary from Siem Reap to Ho Chi Minh City is designed to be sustainable for the region's ecosystems and communities. We like to travel with the peace of mind that our presence in these remote destinations is playing a positive role towards the conservation of their traditions, culture, and biodiversity.

This approach to our itinerary design is applied across all our destinations, whether it be the Peruvian Amazon, East Indonesia, Galapagos Islands, East Africa, or the Arctic Circle.

VIET



Biodiversity conservation

**Wetland conservation & local stewardship**  
Exploring one of Asia's largest freshwater sanctuaries and the last refuge for Southeast Asian water birds, protected through community-led conservation.



Cultural conservation

**Cultural connection & adaptive river life**  
Exploring a floating village accessible only by water, where guests receive a Buddhist blessing and witness daily river life.



Supporting local economies

**Empowering artisanal livelihoods**  
Visits to floating villages and riverside potters, contributing to their day-to-day sustenance.



Cultural conservation

**Conserving craftsmanship**  
Visiting a riverside village where silversmiths craft ornamental pieces by hand, keeping Khmer artistry alive.



Women's empowerment & cultural conservation

**Supporting women-led weaving cooperatives**  
Silk Island's weaving community preserves Cambodia's textile heritage through traditional looms and natural dyes.



Cultural conservation

**Conserving ancient traditions**  
Visits to temples and traditional dance performances support living heritage and local artists in Cambodia's capital.



Supporting local economies

**Embracing community hospitality**  
Guests are welcomed into local homes to share tropical fruit and folk songs—an authentic exchange that supports village livelihoods and preserves cultural traditions



Supporting local economies

**Cultural exchange & sustainable livelihoods**  
Discovering local temples and markets with community guides, meeting traders and artisans whose work sustains delta communities.



Cultural conservation

**Cultural reflection & heritage preservation**  
The journey ends at Vinh Trang Pagoda, where Buddhist architecture and quiet reflection mark a meaningful farewell to the Mekong.



Sustainable dining

**Local ingredient sourcing**  
Guests join our chef in riverside markets and villages, meeting farmers and fishermen who provide the ingredients for our cuisine onboard.





A glimpse into Mekong's sustainable river-dependent living



Empowering traditional weaving cooperatives led by local women



Supporting sustainable gastronomy through use of locally sourced ingredients

# COMMUNITY ENGAGEMENT

Here are examples of other forms of community engagement which shape our itineraries and excursions across destinations.

## PERUVIAN AMAZON

We work with artisanal tree climbers to demonstrate the process of harvesting palm trees.



## GALAPAGOS ISLANDS

We support local communities in the Galápagos through training initiatives, partnerships with the local library and businesses, and participation in National Park events.



## PERUVIAN AMAZON

We are committed to purchasing paiche from local communities, ensuring sustainable fishing practices and conservation of the species.



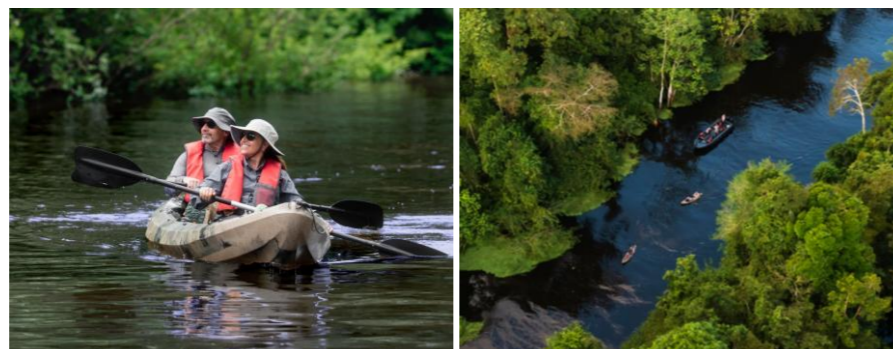
## EAST INDONESIA

We partner with local communities in the remote Asmat region to deliver meaningful cultural exchanges, supporting the local indigenous population



## PERUVIAN AMAZON

We engage local communities along the Ucayali River for traditional canoe rentals, fostering authentic guest experiences.



## EAST INDONESIA

We work with local communities in the Spice Islands to deliver authentic cultural experiences



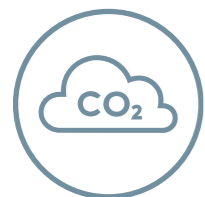
# OUR VISION OF SUSTAINABLE SAILING



## REDUCING RELIANCE ON SINGLE-USE PLASTICS







As part of our commitment to minimizing reliance on single-use plastics, we have implemented several initiatives across our fleet, including:

- Replaced disposable plastic bottles with reusable metal water bottles for guests and crew; eliminated single-use plastic bags in favor of reusable eco-bags across operations.
- Reduced plastic packaging through bulk purchasing, reusable containers, and collaboration with suppliers to adopt biodegradable bags and reusable packing materials.
- Implemented plastic-free policies for onboard operations, events, and guest materials, while utilizing durable, reusable equipment such as tarpaulins and floor mats.
- Conducted crew training and awareness programs on plastic reduction and waste management practices.



## REDUCING ENGINE EMISSIONS

The following measures are being implemented to reduce engine emissions across our fleet:

- |   |   |  |
|---|---|--|
| <br>Leaner use of energy on land with smarter office space choices | <br>Smarter itinerary choices to reduce travel distances | <br>Lower speeds to reduce fuel consumption |
| <br>More efficient use of engines overnight                        | <br>Installation of solar panels on river vessels        | <br>Replacement of auxiliary engines        |



## EFFICIENT WASTE MANAGEMENT

- We are committed to implementing a closed-loop waste management system using reusable, biodegradable, and locally sourced materials to minimize waste and environmental impact while maintaining our guest experience.
- We partner with certified organizations to collect, repurpose, and recycle waste, such as Gomi Recycle in Cambodia and the Indonesian Waste Platform in Bali.
- Waste segregation and certified disposal practices are implemented according to regional policies such as Galápagos National Park's approved Garbage Management Plan.
- We conduct ongoing training for staff and crew on waste management and environmental practices, and support community education in remote regions like Indonesia's Banda Islands.



## DEVELOPING SUSTAINABLE F&B SUPPLY CHAINS

We prioritize locally sourced food to reduce our environmental footprint and support regional communities. By sourcing fresh ingredients from nearby farmers and suppliers, transportation emissions are minimized while ensuring the use of high-quality, seasonal produce for our onboard dining.

This approach also provides guests with an authentic culinary experience rooted in the flavors of each destination.



AQUA EXPEDITIONS